

Keefe Surviving Band Instruments

Williamsport, PA

1909-1941

Serial #	Date	Instrument	Model	Engraving*	Other
682	1909	Cornet	Center Bore	1	red Eagle finger buttons
828	1909	Trumpet	Bb	1	
829	1909	Trumpet	Bb/A	1	[Meacham]
887	1909	Cornet	Bb	1	
911	1909	Trumpet	Bb	1	
915	1909	Baritone		1	12" bell
1047	1909	Baritone		1	
1122	1909	Tuba	Eb		[Humbell House]
3540		Tuba	Eb		
4286		Alto			
5011	1910	Cornet	Highest Grade (HG)	1	removable lead pipe (RLP); HP & LP slides
5016	1910	Cornet	HG	1	RLP; Bb
5026	1910	Cornet	HG	1	RLP; Bb; #21188 on valve; Eagle FB [Meacham]
5028	1910	Cornet	Center Bore	1	
5030	1910	Cornet	HG	1	
5050	1910	Cornet	Center Bore; HG	1	RLP; Bb

5145	1910	Euphonium	HG	1	
5182	1910	Cornet	American	1	RLP; Bb/A
5186	1910	Alto	HG	1	Eb [saved]
5214	1910	Cornet	HG	1	fixed lead pipe (FLP); Bb/A
5223	1910	Euphonium	HG	1	[York Master]
5236	1910	Tuba	HG	1	Eb; bell up (BU)
5251	1910	Euphonium	HG	1	Eagle Finger Buttons (EFB)
5267	1910	Cornet	Center Bore HG	1	6067 on valves; DWK; RLP
5290	1910	Cornet	American	1	SWK; RLP; 6176 on valve [NMM]
5293	1910	Altohorn	HG	1	BU
5301	1910	Tuba			Eb
5352	1910	Cornet	HG	1	FLP; Bb; "H. Ruth"
5374	1910	Cornet	HG	1	RLP; Bb [Meacham]
5406	1910	Altohorn	HG	1	BU
5419	1910	Euphonium	HG	1	BU
5430	1910	Tenor	HG	1	BU; 6091 on valve
5437	1910	Cornet	HG	1	Bb [NMM]
5438	1910	Cornet	HG	1	Bb w/Bb&A shanks, Bb/A RV in second TS
5452	1910	Melody Horn			Eb [Farrar]
5457	1910	Cornet	Bb/A stop rod		rod on 2 nd loop of tuning slide; FLP
5494	1910	Cornet	HG	1	Bb
5495	1910	Cornet	HG	1	Bb

5597	1910	Cornet	Besson	1	FLP; Highest Grade
5610	1911	Cornet	HG	1	Bb
5643	1911	Tuba	Eb	1	Highest Grade; Keefer Mfg Co [Simonetti]
5648	1911	Mellophone	HG	1	
5655	1911	Mellophone	HG	1	
5665	1911	Tuba	HG	1	Eb
5676	1911	Cornet	HG	1	RLP; Bb/A w/C crook; HP & LP slides
5685	1911	Trombone	HG	1	Tenor
5690	1911	Euphonium	HG	1	BU
5731	1911	Tuba	HG	1	Eb; 21033 on valves
5761	1911	Trombone	HG	1	Tenor
5796	1911	Tuba	Helicon Bb		[Humbell House]
5799	1911	Cornet	HG	1	RLP; Bb
5822	1911	Cornet	HG	1	6508 on valves
5823	1911	Cornet	HG	1	FLP
5827	1911	Cornet	HG	1	
5849	1911	Baritone	Oxford		BU
5852	1911	Cornet	Besson	1	FLP; Bb/A RV in tuning slide
5870	1911	Euphonium	HG	1	BU; 11.5" bell
5878	1911	Mellophone			
5911	1911	Cornet	HG	1	RLP; Bb/A; HP & LP slides; 6549 on vlv [York Master]
5919	1911	Trombone			Tenor

5925	1911	Trombone	HG	1	valve
5955	1911	Mellophone			
5972	1911	Trombone	HG	1	Tenor
5974	1911	Trombone	Tenor		“USQMC”; HP & LP slides
5992	1911	Cornet	HG	1	RLP; Bb/A
6000	1911	Cornet	Center Bore	1	
6008	1911	Trombone	HG	1	Tenor
6010	1911	Trombone	HG	1	Tenor
6023	1911	Baritone			Bb; 7329 on valves [Farrar]
6056	1911	Cornet	HG	1	RLP; Bb/A [Humbell House]
6059	1911	Cornet			Bb; 6533 on valves [Farrar]
6067	1911	Cornet		1	
6078	1911	Cornet	HG / Besson	1	
6079	1911	Cornet	Besson	1	Bb
6084	1911	Trombone	Valve	1	Tenor
6085	1911	Cornet	Highest Grade	1	Keefer 1 Levy mpc
6129	1911	Cornet	Maker	1	RLP; Bb/A
6134	1911	Cornet	Maker	1	RLP; Bb/A
6171	1911	Trombone			Tenor; push button style water key
6189	1911	Cornet	Center Bore HG	1	RLP; DWK; Bb/A shanks
6196	1911	Bugle	HG		in G; 23” long
6206	1912	Cornet	HG	1	RLP; Bb/A; oval Keefer on vlv 2

6237	1912	Mellophone			
6239	1912	Mellophone			
6242	1912	Tuba	HG	1	Eb; BU [York Master]
6256	1912	Cornet	Center Bore; HG	1	RLP; Bb/A; DWK [Patton, 2014]
6287	1912	Euphonium	HG	1	[York Master]
6302	1912	Cornet	Besson		
6368	1912	Melody Horn			Eb; 6896 on valves [Farrar]
6381	1912	Cornet			Bb, 6941 on valves [Farrar]
6384	1912	Cornet	HG	1	FLP; Besson style (Grenadier)
6387	1912	Cornet	HG	1	FLP; Bb; Besson style
6400	1912	Cornet	Besson		Bb
6422	1912	Altohorn	HG	1	BU; "Keefer 2" mpc
6446	1912	Cornet	HG	1	Bb/A RV in TS; Eagle FB; "Keefer 1" & "Levy 2" mpcs
6448	1912	Cornet	HG	1	Bb/A RV in TS
6468	1912	Cornet	Besson	1	Bb/A RV in TS
6508	1912	Euphonium	HG	1	BU
6515	1912	Cornet	HG	1	Bb; blue eagle FB; #7136 on valve
6540	1912	Tuba	HG	1	Eb; 18" bell
6583		Tuba	Maker	2	Eb; 16" bell
6607	1912	Trombone	Tenor valve	1	7" bell
6609	1912	Trombone	Tenor valve	1	6.75" bell
6610	1912	Trombone			Bb valve; 7109 on valves [Farrar]

6619	1912	Cornet	HG	1	Bb/A; Besson style
6633	1912	Trombone	HG	1	Tenor
6643	1912	Baritone	HG	1	
6644	1912	Euphonium	HG	1	BU; 11.5" bell
6649	1912	Cornet	Center Bore	1	Bb
6660	1912	Cornet	Besson	1	Bb
6675	1912	Cornet	HG	1	Bb
6677	1912	Cornet	HG	1	Bb; RLP; Eagle FB
6678	1912	Cornet	HG	1	RLP; Bb/A; HP & LP slides
6705	1912	Trombone	HG	1	Tenor
6725	1912	Mellophone			
6730	1912	Trombone	HG	1	Tenor
6742	1912	Cornet	HG	1	Red Eagle FB [ebay]
6753	1912	Tuba	Eb		BU; 16" bell
6754	1912	Tuba	Eb		
6757	1912	Tuba	Helicon Eb		[Humbell House]
6761	1912	Tuba	Helicon Eb		[Humbell House]
6765	1912	Cornet	Bb	1	HG; 7240 on vlv; sold \$500 in 2022 [saved]
6784	1912	Tuba	Eb?	1	HG; 7276 on vlv
6791	1912	Euphonium	HG	1	
6825	1913	Cornet	HG	1	Bb; 7353 on valves; Besson style
6844	1913	Tuba	Helicon BBb	1	6855 on valves

6845	1913	Trombone	HG	1	Tenor; push button style WK [York Master]
6866	1913	Baritone	short		
6884	1913	Cornet	HG	1	Bb; S bore
6940	1929	Alto Sax	LP A	5	Indiana BIC stencil from 1929 if their serial #
6941	1913	Cornet			Bb/A
6970	1913	Helicon	HG	1	Eb
6984	1913	Trumpet		1	Eagle FB; main TS Bb/A stop rod
7007	1913	Trumpet			Bb/A stop rod in main slide
7015	1913	Tuba	Eb		
7030	1913	Tuba	Eb		
7046	1913	Trombone	Tenor valve		
7053	1913	Altohorn	HG	1	Circular; BU
7060	1913	Altohorn	HG	1	“Keefer 2” mpc
7083	1913	Cornet	HG	1	Bb; “S” bore; Eagle FB
71xx	1913	Tuba	Helicon		
7150	1913	Trombone	HG	1	Tenor; push button WK
7172	1913	Trombone	Tenor		
7180	1913	Trombone	Tenor	2	
7194	1913	Trombone	Tenor	2	
7298	1913	Trombone	Tenor	2	
7405	1914	Trombone	valve		
7416	1914	Cornet	HG	1	2 blue eagle FB, parts horn; Grenadier/Oxford

7451	1914	Euphonium	HG	1	Eagle FB
7476	1914	Trombone	Tenor	2	
7620	1914	Trumpet	HG		Bb/A; LP goes behind 3 rd slide
7626	1914	Alto			
7647	1914	Trombone			
7668	1914	Cornet	Oxford	2	John Hazel; said to be 1917 [Tabor Museum]
7670	1914	Trumpet	HG	1	Rev. 3 rd slide; Bb; eagle FB [Meacham]
7671	1914	Cornet	HG	1	Bb; Red Eagle FB [Farrar, sold on Ebay 2021]
7676	1914	Trombone	valve		
7681	1914	Trombone	Tenor valve	1	Highest Grade
7688	1914	Trombone	slide	2	
7709	1914	Cornet	HG	1	Bb/A; RLP
7724	1914	Cornet	HG	1	RLP; S bore; HP & LP slides; RV & non-RV main slides
7766	1914	Cornet	London	1	HP & LP slides; patent case; red Eagle FB
7769	1914	Cornet	London	1	Low pitch
7789	1914	Tuba	Eb		[Humbell House]
7797	1914	Tuba	Eb		
7800	1914	Trombone	Tenor		“Made by Keefer / Williamsport, PA”
7840	1914	Baritone	HG	1	BU; could be 7340 [Tabor Museum]
7852	1914	Altohorn	HG		BU
7875	1914	Cornet	Oxford	1	Eagle FB; C slide; Bb/A RV in TS; serial # on vlv 2
7890	1914	Altophone			BU; round; C slide

7900	1914	Cornet	Oxford		Bb/A RV in tuning slide; Eagle FB
79xx	1914	Trombone	Septor	2	Keefer in diamond pattern
7953	1914	Cornet	Oxford	2	blue Eagle FB, Bb; no union [S. Miller]
7960	1914	Cornet	Besson	2	Eagle FB; Bb; no Union label
7980	1914	Trombone	Tenor		
7981	1914	Trombone	Tenor valve		
7999	1914	Cornet	Bb/A	2	Eagle FB
8000	1915	Cornet	Bb/A	2	Eagle FB
8009	1915	Cornet	Oxford	2	LP; Bb/A
8020	1915	Baritone	Bb	2	Blue Eagle FB [Walden's Music]
8035	1915	Baritone	Bb	2	oval Keefer logo on valve 2
8063	1915	Cornet	Bb/A	2	HP/LP; Eagle FB
8089	1915	Cornet	Modern Clear Bore	2	Bb; FLP; SWK; "Gerard College"
8540	1915	Tuba	Eb		BU
9016	c1924	Trombone	Tenor		micro-tuner in bell slide matching trumpets from 1920s
9021	1915	Cornet	Bb/A	2	small bore
9025	1915	Trombone	Tenor		"Keefer" counterweight; 6-3/8" bell
9028	1915	Cornet	Besson		
9029	1915	Cornet	Besson	2	Eagle FB
9052	1915	Cornet	Bb		parts only

The Keefer-Simons trombones were developed in 1924 and released in 1925. A letter from March 1925 from Simons praises the new trombone and says that it was developed after seeing how well the Keefer-Williams trumpet came out.

9053	c1925	Trombone	Tenor	4	football engraving #6; "Keefer-Simons" mouthpiece
9070	c1925	Trombone	Tenor	4	
9125	1915	Trombone	Tenor	4	Keefer inside large leaf engraving; low pitch
9143	1915	Trombone	Bass		0.530" bore; 8.5" bell
9145	1915	Trombone			
9165	1915	Trombone	Tenor		
9169	c1925	Trombone	Tenor		"Keefer-Simons" on slide
9253	1915	Altohorn	Eb	2	
9265	1915	Euphonium			Eagle FB
9267	c1925	Trombone	Keefer-Simons	6	slide tuning; "Keefer-Simons Symph" on slide; RV to F
9268	1915	Euphonium			BU; 9" bell
9272	1915	Mellophone		2	
9312	1915	Cornet	Grenadier		
9314	1915	Cornet			sales slip dated 1918 [Rusty R.] [Farrar]
9319	1915	Cornet	Bb/A	2	M bore; Keefer "o" mpc; Keefer mute; Eagle FB
9336	1915	Cornet	American?		
9347	c1925	Trombone	Keefer-Simons	6	S bore [K. Scott]
9360	1915	Trombone	Tenor	6	LP [saved]
9363	1925	Trombone	Keefer-Simons		
9364	1915	Cornet	Bb		Bb/A RV; C slide [Meacham]
9381	1915	Trombone	Tenor		slide tuning
9403	1915	Trombone	Tenor		slide tuning

9408	1915	Trombone	Tenor	6	slide tuning; K-S “2” mpc
	1915	Keefe is newly listed with the metal polishers’ union and started stamping their instruments.			
9424	1915	Trombone	Tenor valve	2	Eagle FB; Union label
9447	1915	Tuba	Eb		
9450	1915	Tuba	Eb	2	union; LP; 3 vlv
9452	1915	Trombone	Tenor		
9466	c1925	Trombone	Keefe-Simons	7	“Special” model w/”JR” in keystone; 7.5” bell
9488	1915	Trumpet	Bb		Red FB; RV in LP
9503		Cornet	Besson style		Bb/A RV in tuning slide; C crook
9505	1915	Cornet	Oxford	2	Besson style; Eagle FB; FLP; SWK [NMM]
9508		Cornet	Besson		same as 9503
9583	1915	Cornet	Bb/A RV	2	Union; M bore; red Eagle FB; Levy #1 mpc
9657	1916	Cornet	Grenadier	2	M bore, red eagle FB; crushed bell
9680	1916	Cornet	Bb		Union label; M bore; LP [Farrar]
9686	1916	Cornet	Besson	2	Bb/A RV in tuning slide; Eagle FB; Union [Patton]
9717	1916	Cornet	Grenadier	2	Bb/A RV in TS, red Eagle FB; “M”; “HP”
9721	1916	Tuba	BBb		[Humbell House]
9829	1916	Tuba	Eb		Eagle FB
9839	1916	Altohorn		2	Eagle FB; bell up circular horn [saved]
9878		Trombone	Bass	6	
9885	1916	Altohorn			Eagle FB
9965	1916	Cornet	Bb		Union label

9989	1916	Euphonium			Eagle FB
9998	1916	Baritone			Union label
10xxx	1916	Trombone	Keefer-Simons mpc		case tag same as trumpet 10060 [York Master]
10039	1916	Baritone			10" bell; 26" tall
10058	1916	Cornet	Besson style	2	Bb; Union label; M bore; HP
10064	1916	Cornet	Grenadier	2	Bb/A RV; union; M bore; HP; USQMC [Patton] 14.75" L; 4.625" bell; 0.462" bore
10107	1916	Trumpet	Bb/A		Union label; Eagle FB
10109	1916	Trumpet	Bb/A RV		
10151	1916	Cornet	Besson		
10201	1917	Cornet	Besson	2	Bb/A RV in tuning slide; Union label
10238	1917	Cornet	Bb	2	Union; oval Keefer stamp; blue Eagle FB; Levy mpc
10246	1917	Helicon	Eb	2	Union; red Eagle FB [saved]
10248	1917	Helicon	Eb		[Farrar; now Humble House]
10271	1917	Tenor	Eb		[Farrar]
10286	1917	Trombone	Narrow Gauge vlv	3	Eagle FB; Union label; oval Keefer stamp; 0.461" bore
	1917	USQMC markings probably from a contract in 1917 during the war.			
10368	1917	Trumpet	Bb/A RV	2	"USQMC"; union label; "2" bore = 0.462" [Patton]
10379	1917	Tuba	Eb		"USQMC"; 16" bell
10421	1917	Cornet	Bb/A		"USQMC"
10426	1917	Cornet	Bb/A		"HP"; Eagle FB
10430	1917	Cornet	Bb/A		"USQMC"

10476	1917	Alto	Eb	1	“USQMC” [S. McAnally]
10537	1917	Cornet	Bb/A		Eagle FB
10543	1917	Cornet	Bb/A	2	Union; M; LP; Besson style; Keefer in oval stamp
10581	1917	Altohorn			“USQMC”
10582	1917	Altohorn			
10618	1918	Trumpet	Mateey		“Model Mateey”; Bb/A
10620	1918	Helicon	BBb		
10698	1918	Trumpet	Bb/A		Union label; Bb/A RV
10725	1918	Helicon	Eb		
10776	1918	Cornet	Bb/A		Eagle FB
10911	1918	Tuba			
10948	1918	Altohorn			
10950	1918	Altohorn			“USQMC”
11081	1919	Cornet	Besson	3	Eagle FB; Union label; Bb
	1919	Keefer was listed with the Metal Polishers’ Union in 1918, but gone in 1919.			
11103	1919	Cornet	Bb Highest Grade	1	12097 on valve; no union; 1883 pat. case
11105	1919	Cornet	Besson		Eagle FB; M bore
11169	1919	Cornet	Chorister	2	C/Bb RV; “USQMC”
11176	1919	Trumpet	Bb/A		
11199	1919	Altohorn			
11200	1919	Altohorn			“USQMC”
11204	1919	Alto			

11206	1919	Alto				“USQMC” [P. Kauffman]
11207	1919	Alto				
11217	1919	Alto				
11229	1919	Cornet	Bb/A			“USQMC”
11234	1919	Cornet	Besson			Eagle FB
11251	1919	Cornet				Eagle FB
11287	1919	Tuba	Eb			“Keefer Mfg. Co”; 16” bell
11349	1920	Cornet				A shank
11350	1920	Cornet				HP & LP slides
11368	1920	Sousaphone	Eb			
11419	1920	Cornet				HP; M bore; Eagle FB
11428	1920	Cornet	Courtois	3		Blue Eagle FB; M; HP; no union
11458	1920	Altohorn				
11526	1920	Cornet	Bb			Eagle FB; HP/LP slides
11531	1920	Cornet	Bb			Eagle FB
11600	1920	Tuba	Eb			Eagle FB
11620	1920	Trumpet	Cabaret	3		no Union label
11629	1920	Trumpet				
11637	1920	Cornet	Chorister	3		LP; C with Bb/C RV; no union label (Patton collection)
11644	1920	Trumpet	Cabaret			
11695	1921	Cornet	Besson style	2		Grenadier; M bore; HP [York Master]
11703	1921	Cornet	Bb			Eagle FB

11749	1921	Baritone	Oxford		Eagle FB; 10.25" bell
11750	1921	Baritone	Bb	3	
11757	1921	Baritone	Bb	3	[Simonetti]
11821	1921	Cornet	Bb		Eagle FB
11849	1921	Cornet	London Bb		RLP; dual WK [J. Keefer]
11860	1921	Cornet	Bb		HP
11864	1921	Cornet	Besson		HP
11868	1921	Cornet	Besson		M / HP
11873	1921	Cornet	Besson		M / LP
11883	1921	Trumpet	Cabaret	2	HP; single TS brace; Bb
11896	1921	Cornet	Besson		M / HP
11900	1921	Euphonium			Eagle FB; "Keefer 5" mpc
11918	1921	Mellophone	Eb	2	[eBay, 2024]
11924	1921	Mellophone	Eb	2	[NMM]
11928	1921	Tuba	EEb		3 vlv
11932	1921	Tuba			
11982	1921	Trumpet	LP/C	2	RV in bell; parts horn
11987	1921	Trumpet	?	3	HP & LP slides; Bb/A RV in bell
P21486	1921	Saxophone	Tenor	3/4	Pan American stencil c.1921 [saved]
P28830	1922	Saxophone	Tenor	4	PA stencil; Conn patent 1,153,489 [saved]
12000	1922	Cornet	Besson		
12031	1922	Cornet	Besson		

12036	1922	Cornet	Besson	3	no Union label; Bb/A RV in tuning slide
12078	1922	Tuba	Eb		
12085	1922	Altohorn			Eagle FB
12122	1922	Trumpet	Stentor		
12123	1922	Trumpet			Bb
12145	1922	Cornet	Oxford		Bb & A shanks; HP; Besson style
12146	1922	Cornet	Oxford		same
12180	1922	Cornet	Bb		Bb/A RV in tuning slide
12253	1922	Baritone			HP
12315	1922	Cornet			
12335	1922	Tuba	Eb	4	[saved]
12365	1923	Trumpet	Bb		HP/LP slides
12392	1923	Altohorn			
12422	1923	Trumpet	Stentor	2	
12451	1923	Cornet	Besson	3 (in diamond)	no Union label
12481	1923	Trumpet	Bb/A	3	Highest Grade; RV in bell behind valves
12495	1923	Cornet	Bb/A		
12592	1923	Sousaphone			
12614	1923	Trumpet	Bb		

Trumpets #12620 & #12733 best match the Stentor design shown in the 1922 & 1924 catalogs.

12620	1923	Trumpet	Stentor	2a	Bb/A RV; Keefer in diamond pattern [NMM]
12659	1923	Mellophone	Eb		HP

12733	1924	Trumpet	Stentor		Bb/A RV
12739	1924	Trumpet	Bb		HP
12810	1924	Trumpet	Bb		LP
12839	1924	Trumpet	Bb		LP
12843	1924	Trumpet	Stentor	2a	Bb/A RV [saved]
12868	1924	Cornet	Bb		
12869	1924	Cornet	Bb		LP
12886	1924	Cornet	Grenadier	2a	horizontal oval Keefer logo [Farrar; sold in 2023]
12919	1924	Helicon	BBb		
12978	1924	Trumpet	Bass	4	
12992	1924	Tenor	Eb		[Farrar]
13032	1925	Trumpet	Stentor	4	engr. is a horizontal variation of 6; Bb/A RV; K in oval
13041	1925	Trumpet	Bb/A RV	4	Keefer in oval on vlv 2 [ebay]
13131	1925	Trumpet	Bb	4	Keefer in oval; Bb/A stop rod on bottom of main TS
13181	1925	Trumpet	Harmonic	4	S bore; LP; double TS matches 1924 Harmonic series
13216	1925	Altohorn			LP
13258	1925	Tuba	Eb	4	
13266	1925	Trumpet	Bb		
13274	1925	Trumpet	Harmonic	4	double section tuning slide
13277	1925	Sousaphone	Eb		Wagnerphone in 1922 & 1924 catalogs
13306	1925	Sousaphone	BBb		22" bell; 0.685" bore; "BPOE 436"
13307	1925	Sousaphone	BBb	4	23" bell; 0.675" bore

13331	1925	Trumpet	Bb/A		
13339	1925	Trumpet	Bb/A RV	4	No.1; RV in bell
13348	1925	Trumpet	Bb/A		
	1925	Keefer receives patent #1,555,986 in October for tuning slide adjuster (micro-tuner) not shown in 1924 cat.			
13350	1925	Trumpet	Bb	4	main double slide micro-tuner [not in 1922 or 1924 cat]
13355	1925	Trumpet	Bb	4	micro-tuner; Keefer in oval on vlv 2
1338x	1925	Trumpet	Bb	4	no micro-tuner
13393	1925	Trumpet	Bb		main slide micro-tuner
13501	1926	Sousaphone			
13532	1926	Trumpet	Milharmonic		micro-tuner; "LP / No.2"
13537	1926	Trumpet	Philharmonic	4	micro-tuner; "LP / No.1"; Keefer in oval stamp
13540	1926	Euphonium			
13584	1926	Trumpet	Dansharmonic	4	micro-tuner; "LP/ No.3"; Keefer in oval stamp [saved]
13624	1926	Trumpet	Bb		reversed 3 rd slide
13669	1926	Trumpet	Philharmonic	4	m-tuner; No.1; 0.435"; Maestro 3 mpc; gold pl [Patton]
13700	1927	Trumpet	Bb		micro-tuner
13855	1927	Trumpet	Harmonic	4	micro-tuner; no bore #; LP

1927 Brua Sr. dies February 10th; were the serial numbers reset after this?

There are no numbers found in the 14000 to 18000 range and very few up to 24000 so I am uncertain about these. There are no trumpets and these seem to be random engravings.

18081		Cornet	Chorister	4	in C
18181		Cornet	Grenadier		Bb/A; HP/LP

18446		Cornet	Bb		20524 on valves [Farrar]
19014		Altohorn			
19149		Baritone	HG	1	“Brua C Keefer Mfg Co”
19400		Trombone		6	
19515		Mellophone			
19877		Helicon	Eb		[Farrar]
20641		Altohorn			8” bell
21898		Cornet	Besson	3	

Trumpets jump from the 13000 to 24000 range while using the same design, so I assume no break in production.

24047	1927	Trumpet	Dansharmonic		LP; No.3
24066	1927	Trumpet	Philharmonic		micro-tuner; LP; No.1
24074	1927	Trumpet	Harmonic?	4	
24076	1927	Sousaphone	Eb		20” bell
24088	1927	Sousaphone	Eb	4	[Humbell House]
24108	1927	Trumpet	Bb/A	4	gold plated; 0.459”; 4.625” bell; Bb/A RV
24135	1927	Trumpet	Bb		
24151	1927	Sousaphone	BBb		4 vlv [Simonetti]
24163	1927	Trumpet	Bb		
24181	1927	Trumpet	Bb	4	“1”; micro-tuner; btm 3rd ring w/stop rod (K. Gilchrist)
24197	1927	Trumpet	Bb		micro-tuner; bottom 3 rd ring w/upper stop rod
24200	1927	Trumpet	Bb		micro-tuner; 2 bore; LP; “Keefer Maestro 2” mpc
24298	1927	Trumpet	Bb		

24405	1928	Trumpet	Bb		micro-tuner; 2 bore; reclining nude in engraving
24450	1928	Sousaphone	Eb		“Keefer Mfg. Co.”; 24” bell; 0.686” bore
24536	1928	Trumpet	Bb/A	4	
24589	1928	Trumpet	Bb	4	#3 bore; micro-tuner in main slide; “James Hackett”
24605	1928	Ballad Horn	C, Eb, F	4	[J. Gabriel collection]
24756	1929	Trumpet	Bb	4	
24827	1929	Trumpet	Bb/A RV		Eagle FB; HP/LP slides
24875	1929	Trumpet	Harmonic	4	#2 bore; 1st slide hook
24918	1929	Cornet	C/Bb		LP
25xxx		Sousaphone	Eb		25” bell
25320	1933	Sousaphone	BBb		[Humbell House]
25324	1934	Sousaphone	BBb		3 vlv [Simonetti]
25430	1935	Trombone	Italian Style valve		Tenor [these are shown in the 1922 & 1924 catalogs]
25480	1936	Trombone	Italian Style valve		Tenor
25578	1937	Mellophone			
25581	1937	Mellophone			Keefer 2 mpc
25600	1938	Baritone			
25614	1938	Sousaphone			valve section only

Separate Listing for “JR”, “Intonatic” and “Keefer-Williams” model Trumpets: For dating purposes I am assuming the first K-W trumpets were built in mid-1924 using a 10000 series, then ignoring any serial number jumps and assuming a total of about 1,900 made in 17 years. My dating graph starts out with a steady production rate then a sharp decline in 1930 to the end in 1941. I then use these dates to estimate dates for all other instruments above after 24000.

1924 Ad from February 1925 says that the new Keefer-Williams trumpets had been developed over the past year.

10003	1924	Trumpet	JR		K-W 3 mpc [Meacham]
10006	1924	Trumpet	K-Williams	5	Bb; fixed 3 rd slide ring on bottom w/top rod
10008	1924	Trumpet	K-W	6	Bb; no 3 rd slide ring
10015	1924	Trumpet	K-W		Bb
10028	1925	Trumpet	JR		Bb [Farrar]
10032	1925	Trumpet	JR-1		Bb
10033	1925	Trumpet	K-W	6	Bb; no 3 rd slide ring; #2 bore [saved]
10045	1925	Trumpet	K-W		Bb
10048	1925	Trumpet	K-W		Bb
10051	1925	Trumpet	K-W		Bb
10053	1925	Trumpet	JR-2	6	Bb
10056	1925	Trumpet	JR-2	6	Bb; no union label; 0.435" bore [Patton]
10057	1925	Trumpet	JR-2	6	Bb; no union; Coues. mute
10060	1925	Trumpet	JR-2	6	Bb; case; Coues. Perfectone mute; K-W 3 mpc [Patton] 0.435" bore; 4.75" bell; 19.5" long; near mint cond.
10098	1926	Trumpet	K-W	5	Bb; bottom 3 rd slide ring; "JR"; no union label

No K-W trumpets produced in the 10100 to 24000 range.

20002	1940	Trumpet	Intonatic	8	Bb; reversed 3 rd slide [P. Durieux]
24468	1928	Trumpet	K-W	5	
24480	1928	Trumpet	K-W	4	"2"; 0.438", 4-7/8"; hand-hammered bell
24xxx	1928	Trumpet	K-W	4	hand-hammered inner bell; gold plate; naked lady; Bb & A slides; Maestro #1 & Williams #3 mpc

24494	1928	Trumpet	K-W		hand-hammered inner bell
24515	1928	Trumpet	K-W		hand-hammered inner bell; gold-plated; naked lady
24516	1928	Trumpet	K-W	4	hammered inner bell, gold engr., #1 = 0.462" [Patton]
24589	1928	Trumpet	K-W	?	"James Hackett" engraved on bell
24670	1929	Trumpet	K-W 2	4	btm 3 rd ring; gold pl., naked lady; 4.5"; 19.5"; 0.435"
24773	1929	Trumpet	K-W 2	4	btm 3 rd ring, naked lady; hammered inner bell; 0.435"
24774	1929	Trumpet	K-W	4	bottom 3 rd slide ring
24819	1929	Trumpet	K-W		#2; missing 3 rd slide
24877	1929	Trumpet	K-W	7	#1; Keystone no JR; stop rod on TS
24932	1929	Trumpet	K-W	4	
24963	1929	Trumpet	K-W		bottom 3 rd ring
24968	1929	Trumpet	K-W	6	#1 bore = 0.458"
24969	1929	Trumpet	K-W		bottom 3 rd slide ring
24999	1929	Trumpet	K-W		
25000	1930	Trumpet	K-W	4	#3 bore
25041	1930	Trumpet	K-W	7	Keystone w/o JR; bottom 3 rd ring
25082	1930	Trumpet	K-W	4	#3 bore; naked lady engraving [ebay]
25106	1931	Trumpet	K-W		
25171	1932	Trumpet	K-W 1	4	top 3 rd ring; bottom rod; forward 2 nd slide
25193	1932	Trumpet	K-W		bottom 3 rd ring and top rod
25244	1933	Trumpet	K-W		same
25273	1933	Trumpet	K-W 1		bottom 3 rd ring; forward 2 nd slide; very worn out

25311	1933	Trumpet	K-W		#2; sold for \$189 in 2020
25344	1933	Trumpet	K-W	7	No JR in keystone; no bore #
25455	1933	Trumpet	K-W Special	7	"1"; "JR" in keystone; K-W #2 mpc
25250	1933	Trumpet	K-W		same
25272	1933	Trumpet	K-W	4	"2"; no "JR"; case; K-W mpc; Couesnon mute; same case and accessories as trumpet #10060
25286	1933	Trumpet	K-W	4	same as 25272; lady engraving on bell
25311	1934	Trumpet	K-W	5	"2"
25338	1934	Trumpet	K-W	5	#1 with Bb/A RV in bell
25341	1934	Trumpet	K-W	7	no JR in keystone; "1" ; 0.458" bore [Patton]
25346	1934	Trumpet	K-W		
25361	1934	Trumpet	K-W Special	7	
25429	1935	Trumpet	K-W		
25455	1935	Trumpet	K-W Special	7	#1 bore; JR in keystone; bottom 3rd ring
25490	1936	Trumpet	K-W Special	7	Eagle FB; bottom 3 rd slide ring w/top rod; "2"; 0.438"
25500	1936	Trumpet	K-W	4	bottom 3rd ring
25516	1936	Trumpet	K-W	5	JR; 1
25518	1936	Trumpet	K-W	4	bottom 3 rd slide ring
25521	1937	Trumpet	K-W Special	7	bottom 3 rd slide ring; #1 0.45" bore; 4-5/8" bell; 19.5" l
25525	1937	Trumpet	K-W Special		bottom 3 rd slide ring
25552	1937	Trumpet	K-W	5	LP; bottom 3 rd ring; 0.438" bore
25560	1937	Trumpet	K-W Special		JR

25650	1939	Trumpet	K-W		bottom 3 rd slide ring
25652	1939	Trumpet	K-W		no 3 rd ring
25714	1940	Trumpet	K-W	6	LP; 3
25716	1940	Trumpet	K-W		LP; 3
25733	1940	Trumpet	K-W	5	LP; "JR-2"; 0.435" bore; case; K-W 3 mpc [Patton] 4.625" bell; 19.625" long
25751	1940	Trumpet	K-W	5	LP; JR-2 [saved]
Large gap in serial numbers.					
29972	1941	Trumpet	K-W		LP; bottom 3 rd slide ring
30044	1941	Trumpet	K-W		purchased used in 1955
30096	1941	Trumpet	L		same design as 30097 [Goodwill; saved]
30097	1941	Trumpet	L	8	L bore 0.463"; btm 3 rd slide ring and top rod [Patton] [R. Aleman, 2024]
31001	1941	Trumpet			
31007	1941	Trumpet	Intonatic		M bore; 3 rd slide rod & lower ring
31045	1941	Cornet			
31058	1941	Trumpet	Intonatic	8	L bore 0.465"

Keefer-Williams model trumpets are not listed in the early 1924 catalog yet one source said that Keefer ran an ad mentioning them in 1924; possibly later in the year. The first ad I have a copy of is from February 1925 saying that they had been developed over the past year. *Music Trade Review* ran a news article in March of 1927 mentioning the "new Keefer-Williams cornet". Since I have never found a cornet, this could mean a trumpet.

Cornet Models:

Oxford: This is a holdover from Distin; Besson style with single water key lead pipe looping behind the 3rd slide; removable shanks

London: Another holdover from Distin; Courtois style dual water key lead pipe looping outside of the 3rd slide; removable shanks

American: Another Distin holdover; single water key lead pipe with short second loop going into 3rd valve; removable shanks

Center Bore: A majority of early Keefer cornets follow this pattern with removable tuning shanks, double water key lead pipe going through the two branches of the 3rd slide and all labeled “Highest Grade”.

Bb/A Stop Rod: Double loop tuning slide with stop rod on 2nd loop; fixed lead pipe; only found on #5457 so far so custom?

Grenadier: Most later Keefer cornets follow this pattern with single water key fixed lead pipe looping behind the 3rd slide matching the traditional Besson/Courtois design; listed in the 1922 catalog as “New” and is the only model shown in the 1922 and 1924 catalogs.

Modernized Center Bore: fixed lead pipe with single water key and second loop going between the branches of the 3rd slide; I have only found one example, #8089, and marked for Gerard College.

End of Production: It is said that production of brass instruments ended in 1941 due to the loss of their source for French Trumpet brass. This comes from John Hazel historian John Hunsinger. [probably from notes he has from Keefer historian Lloyd Farrar] This type of brass is mentioned in the 1920s catalogs.

WWII: comment from listing of Keefer Intonatic model trumpet at Horn-u-copia.net: “James Keefer, son of Brua Keefer III, says that a few handmade horns were done during WWII by custom order only; otherwise the factory was for war production.”

German Keefer Instruments: John Hunsinger related to me that Brua Keefer III sold some German made stencils with just the name “Keefer” on them. These may date to the 1980s and were student quality horns.

***Engraving Styles:**

Style 1: Stamped lettering “Brua C. Keefer Mfg Co / Maker / Williamsport PA / Highest Grade / #” [by Charles Otto]



Style 2: Hand-engraved name in block letters, serial # moves to valve 2 [by Charles Otto]



Style 2a: Same letters as 2 but now with a diamond pattern Keefer name. Used in mid-1920s. [Charles Otto]



Style 3: large “KEEFER” in center [by Charles Otto]



Style 4: oval with Keefer, sometimes highly engraved [by Charles Otto]



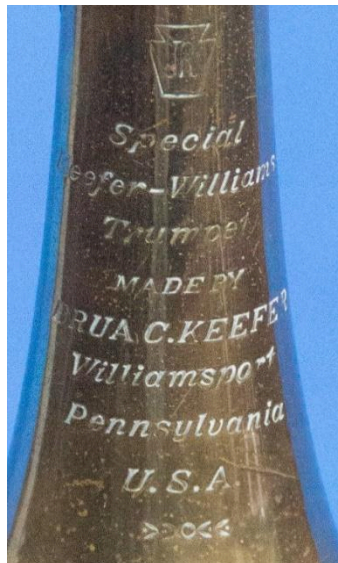
Style 5: swirl logo with Keefeer in center [possibly by Arthur Magliocco]



Style 6: Eagle and keystone with Keefeer and large K [possibly by Arthur Magliocco]



Style 7: stamped lettering with “JR” inside the keystone; found on Keefer-Williams model trumpets and Keefer-Simons trombones [#25341 K-W has keystone but no "JR" which is likely for Brua Jr.]



Style 8: horse collar wreath found on Intonatic trumpet [crude work possibly done by Arthur Magliocco]



Based on when the different engraving styles show up in the serial numbers, I would order these chronologically 1 through 8.

Style 1 = 0 to 7900 Style 2 = 7000 to 12000 Style 2a = 12000 to 13000 Style 3 = 11000 to 22000

Style 4 = 9000 to 25500 Style 5 = 10000 to 25800 Style 6 = 9000 to 25800 Style 7 = 25000

Style 8 = 20002 & 30000+

In trying to find a dating method for Keefer, I have to assume that not all serial numbers are chronological. Here are some indicators that I will use in an attempt to date Keefer instruments. There are a lot of assumptions here as I have yet to come across an instrument with a dated receipt or warranty except for #9314 which is three years later than my date but I don't know if the receipt was when it was new or used.

1. Brua C. Keefer Sr. bought the Distin company on March 1, 1909 and I would assume he started serial numbers at 0 at this time yet there are only a few scattered examples up to 5000. After this they are very consistent so I have this as a reset to 5000 in 1910.

2. Sometime in 1914, union organizer George Leary of the Metal Polishers, Metal Buffers & Platers Union met with Brua Keefer about joining. Keefer was all for a union and agreed to join and start using their label. In a 1915 report, Leary says that Keefer was using the label on every bell next to the eagle logo. I have only found this label on the middle valve so he may have moved it soon after 1915. By 1916, Leary reports that, "Mr. Keefer was the first one to sign our new agreement. He is the largest band instrument manufacturer now conducting a strictly union shop and using the label on his instruments. The manufacturers who compose the Band Instrument Manufacturers' Association, headed by Mr. Greenleaf, have been trying to brow beat Mr. Keefer into fighting the union and threatening to force him out of business if he doesn't join them." The 1918 report still includes Keefer as a member of the union but by 1919 Keefer is out and Mr. Leary mentions wanting to visit Keefer about organizing there. Keefer is not mentioned at all in the 1920 report so I will have to assume that the union label ends in 1918. Serial numbers on instruments with the label range from 9424 to 11081.

3. The June 5, 1917 WWI draft record for Brua Keefer Jr. lists the company as "engaged in manufacturing army supplies" for a reason why he should be exempt from service. Instruments with the "USQMC" marking, a requirement for army contracts, range from 10368 to 11229 in the surviving examples so I have to assume that these are in the 1917 period. This also lines up with the union label as many of these have both.

4. The 1922 catalog lists just two styles of cornet; the Bb "Grenadier" model (Distin's father John was in the Grenadier Guards), which has what I call a Besson/Courtois style, and the "Chorister" model in C. The Besson style was used for many years so it's hard to use that for dating but the C cornet is quite rare. This is also shown in the 1924 catalog and the only two matches are #11637 & #18081. More catalogs are needed to narrow down the time period when this was made. It's not too far after the 1919 union end, so starting c.1920.

5. The 1922 catalog lists a bass trumpet in Eb that is not in the 1924 catalog. The only example I have found so far is #12978 which I will assume was made before 1924. With the dates I have now it comes out to 1923.

6. The 1922 and 1924 catalogs show an “Italian” style valve trombone with an angled bell. The only two examples found have serial numbers 25430 and 25480. If these were made at this time, then Keefer was using a different numbering sequence for them. I have not seen a bell engraving for these which might help in dating them.

7. A Flugel horn in Bb is in the 1924 catalog but not in 1922. If examples could be found this might help in dating.

8. The Harmonic series of trumpets were added to the catalog in 1924. These match examples in the 13000 & 24000 ranges.

9. The Keefer-Williams trumpets are not in the 1924 catalog yet a February 1925 ad says that they were developed over the last year. I have also found them advertised in 1927 (mentioned as being a “new” model) and 1929. Examples start at 10000 then skip to the 24000 to 25000 range. Many have the stamped engraving style 7 although I have also seen styles 4, 5 & 6. Trumpets marked with “JR” for Brua Jr. have engraving style 5 or 6, leading me to believe that he or another worker like Art Magliocco did the engraving for these. These are much less professional than style 4 or the earlier ones from the teens done by Charles Otto. [Note: James Keefer, grandson of Brua, Jr., said in 2022 that the “JR” mark was more likely that he oversaw the production of these rather than doing them himself.]

10. Production volume should change as the workforce changes. I looked through the census records for 1900 through 1940 for the City of Williamsport and adjoining areas and I have found besides the Keefer owners the following number of people listed as working at a horn factory.

1900 = 9; 1910 = 10; 1915 = 21 [from Union listing – all workers joined that year]; 1920 = 16; 1930 = 9; 1940 = 1 (Art Magliocco)

This would indicate a larger volume per year in teens and twenties, then a fallout after 1930 with the Depression. Charles Otto is the only engraver ever listed, so he may have done all the engraving found for Keefer except for styles 5, 6, & 8, which are not the same artist. He was not working there in 1940 so must have been laid off before then. I doubt if any production was happening after 1940 as the last remaining worker, Arthur Magliocco, lists his job as repairs although he was capable of making instruments, as that was his former job. The loss of an engraver is perhaps why many of the Keefer-Williams trumpets were stamped, as anyone could do that. Engraving such as found in styles 5, 6, & 8 on the Intonatic model trumpet seems rather crude compared to earlier styles. Since the much superior style 4 is mixed in with these, then I have to assume that Charles Otto was doing style 4 and a trainee was doing the others. Perhaps Keefer was just having Otto do piece work during the Depression to save on costs.

11. Keefer serial numbers have several gaps, so I have to assume that these numbers were never used.

0-1000 = a few examples

2000-4000 = only a couple found

5000-13000 = many examples with no breaks except for 8000 which has only 4 known

14000-17000 = none found

18000-21000 = very few examples and no trumpets

22000-23000 = none found

24000-25000 = many examples

26000-30000 = only one found

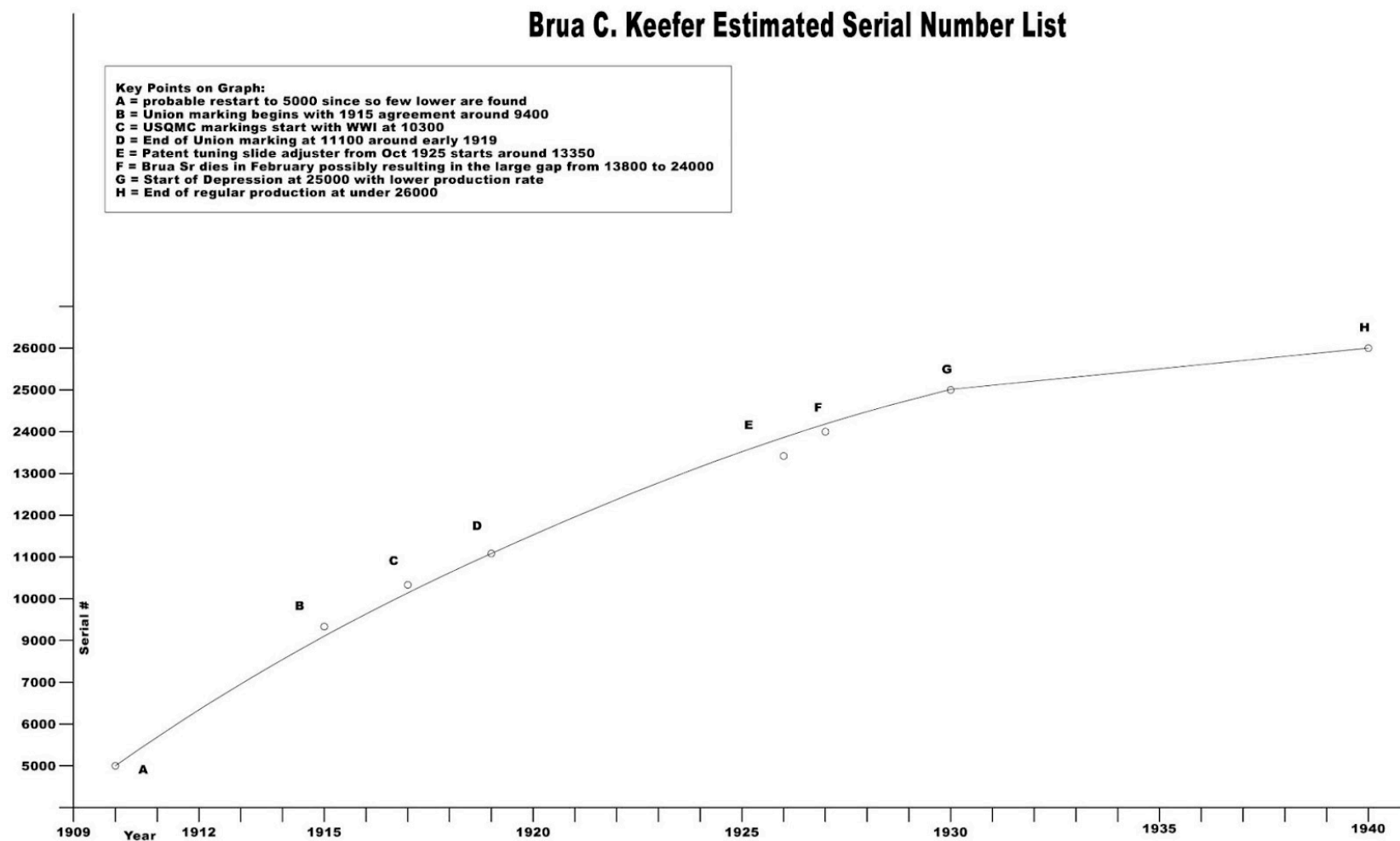
over 30000 = a few examples

If we take only the serial ranges with many examples found, then there are a total of about 10,000 instruments from 1909 until c.1941.

12. Keefer-Simons trombones are found in very small numbers in the 9000 to 9400 range. These were likely developed in 1924 with introduction in 1925. Gardell Simons was endorsing a Conn model 62H up to around 1925 and a Keefer ad from March 1925 has a letter from Simons praising the new trombone. I found one ad from October 1929 that mentions them, and production probably ended by the time Simons moved from the Philadelphia Orchestra to Cincinnati in 1933. Going by this, the trombones do not line up well with the other instruments and their serial numbers may have been separate. In 1934, Simons began using the King Cello-Tone Simons trombone.

13. I have a large-bore trumpet with no model name marked and a bell engraving shown here for Style 8. There are several unique elements found on this instrument and at first, I wasn't sure if this was a Keefer creation. It uses hexagon detail elements such as water key bases, pull knobs, and upper valve casings. I thought that perhaps this used Blessing Super Artist valves, but in a side-by-side comparison, it appears to be more of a copy made by a master craftsman at Keefer. All the elements that appear to be Blessing are slightly different. I found one other example with this style that was marked "Intonatic" so I'm not sure why this one is not marked the same.

Here is the serial number graph that resulted from all my assumptions. It seems to work with a steadily decreasing production rate as competition increases then a sharp decline during the Depression.



Kefer Serial Number Summary:

1909	Kefer starts 3/1	0
1910		reset to 5000
1911		5600
1912		6200
1913		6800
1914		7400
1915	start of union label	9000 (8100 to 9000 is skipped)
1916		9600
1917	start of USQMC	10200
1918	last year for union	10600
1919		11000
1920		11330
1921		11670
1922		12000
1923		12330

Trumpets 12620 & 12733 match Stentor model in 1922 & 1924 catalogs.

1924	12670	(K-W Trumpets start 10000)
1925	13000	(K-W Trumpets = 10020)

Oct. 1925 patent tuning slide adjuster starts at 13350 for trumpets.

1926	13400	(K-W Trumpets = 10080) (K-S Trombones = 9000 start)
1927	13700 end / 24000 start (K-W Trumpets merge)	

1927 Reset to 24000 following Brua Sr's death in Feb?

1928 24400

1929 24700

1930 25000

1931 25080

1932 25160

1933 25240

1934 25320

1935 25400

1936 25460

1937 25520

1938 25580

1939 25640

1940 25700

1941 Regular production ends. It is said that a few trumpets were custom-made during the war. These may be the few found with serial numbers around 30000.

Updated 6/13/2023